

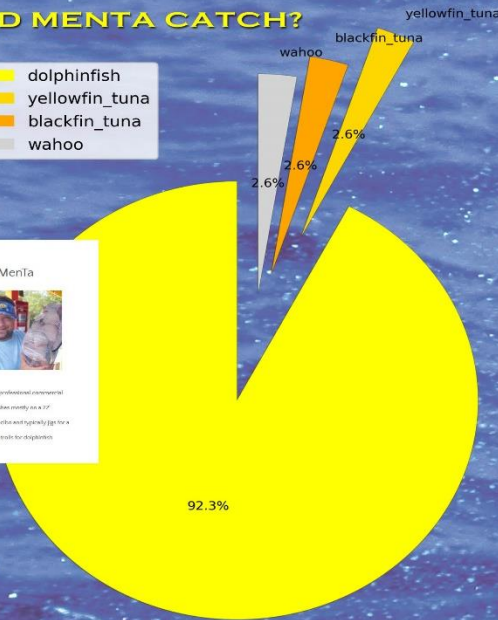


## MENTA'S SEASONALCATCH FALL 2018

### WHAT DID MENTA CATCH?



- dolphinfish
- yellowfin\_tuna
- blackfin\_tuna
- wahoo



**46% MORE LOCAL SEAFOOD SERVED THAN IMPORTS**

### LOCAL SEAFOOD VS. IMPORTED SEAFOOD

TOP LOCAL BY WEIGHT: DOLPHINFISH, 612 LBS

TOP IMPORT BY WEIGHT: ARGENTINE RED SHRIMP, 182 LBS

TOP LOCAL BY COST: DOLPHINFISH, \$3,793

TOP IMPORT BY COST: ARGENTINE RED SHRIMP, \$1,596

### WHERE DID MENTA FISH?



**MENTA**  
22' SEA HAWK  
YAHAMA 200



### TRIPS FROM:

9.22.2018 TO 12.21.2018 (90 DAYS)

**111** THOUSAND TRACKING POINTS  
**10** TRIPS



Local Weight by Species			Total (Pounds)	% MenTa Caught	Import Weight by Species			Total (Pounds)
Rank	Species	Total (Pounds)			Rank	Species	Total (Pounds)	
1	dolphinfish	612	34.6		1	red shrimp	182	
2	yellowfin tuna	13	100		2	cod	154	
3	wahoo	70	100		3	squid	43	
4	spotted spiny lobsters	35			4	queen snapper	34.8	
5	yelloweye snappers	22			5	spiny lobster	26	
6	red hind	18			6	white shrimp	12.6	
7	honeycomb cowfish	52			7	king crab	10	
8	caribbean spiny lobster	49			8	blue point oysters	3	
		<b>871</b>			9	blue crab meat	2	
					10	duxbury oysters	1	
							<b>468.40</b>	

**37.8% OF TOTAL LOCAL CATCH FROM CEDRIC FALL 2018**



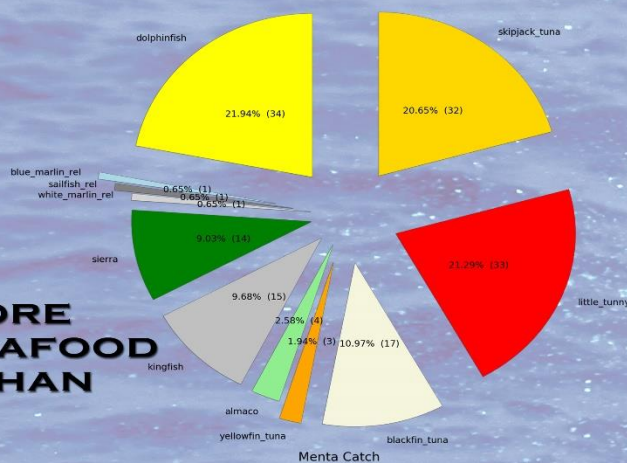


MADE POSSIBLE BY A GRANT FROM THE WAITT FOUNDATION

## MENTA'S SEASONALCATCH SPRING AND SUMMER 2018

### WHAT DID MENTA CATCH?

- dolphinfish
- blue\_marlin\_rel
- sailfish\_rel
- white\_marlin\_rel
- sierra
- kingfish
- almaco
- yellowfin\_tuna
- blackfin\_tuna
- little\_tunny
- skipjack\_tuna



**36% MORE  
LOCAL SEAFOOD  
SERVED THAN  
IMPORTS**

### LOCAL SEAFOOD VS. IMPORTED SEAFOOD

CATEGORY	LOCAL SEAFOOD	IMPORTED SEAFOOD
Number of Species Served	23	15
Total Weight Served (Pounds)	1525	971
Total Cost (USD)	8961.67	9261.9

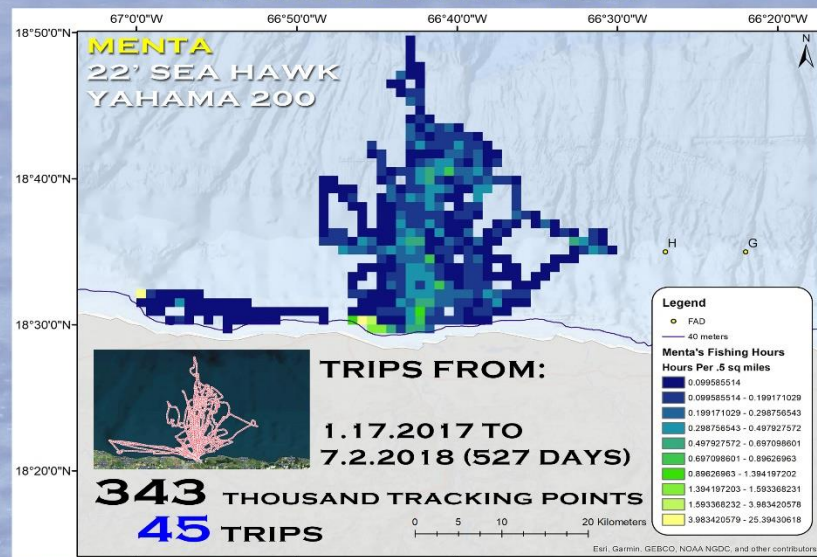
TOP LOCAL BY WEIGHT:  
CHILLO, 226.5 LBS

TOP IMPORT BY WEIGHT:  
ALASKAN COD, 347 LBS

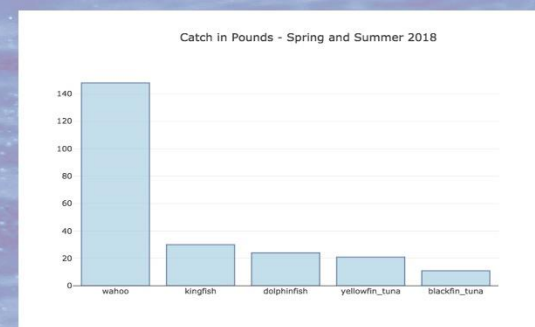
TOP LOCAL BY COST:  
SPOTTED SPINY LOBSTER, \$1458

TOP IMPORT BY COST:  
ARGENTINE RED SHRIMP, \$2668

### WHERE DID MENTA FISH?



- WAHOO (PETO)**  
SEASON: Year-round. Peak South Coast: October-March. Peak North Coast: January-May.  
MANAGEMENT: No commercial restrictions.
- KINGFISH (SIERRA)**  
SEASON: Year-round. Peak North Coast: April-October.  
MANAGEMENT: Minimum size: 16" Fork Length.
- DOLPHINFISH (DORADO)**  
SEASON: Year-round. Peak South Coast: October-March. Peak North Coast: January-May.  
MANAGEMENT: No commercial restrictions.
- BLACKFIN TUNA (ATÚN DE ALETA NEGRA)**  
SEASON: Year-round. Peak South Coast: March-June.  
MANAGEMENT: Minimum size: 37" Fork Length. Requires APIS permit for capture.



**15% OF TOTAL LOCAL  
CATCH FROM CEDRIC  
SPRING-SUMMER 2018**



BEYONDOURSHORES.ORG